

4D3N Pakej Dream Cruise



| Stateroom Category | Offer 1 (Limited seat) | Offer 2 |
|---|--|---------|
| Balcony Deluxe | RM1,766 | RM1,962 |
| Balcony | RM1,535 | RM1,706 |
| Oceanview | N/A | RM1,407 |
| Interior | RM1,126 | RM1,251 |
| 3 rd / 4 th person in the same room | Same price according to room category | |
| Infant Fare (under 24 month) | 50% of the adult fare according to room category | |
| Gratuity on board (per person) | RM247 (PEN & LGK), RM213 (PEN & PHKT), RM239 (LGK & PHKT), RM208 (MLK & PHKT), RM233 (MLK & LGK) for Balcony deluxe & below. Charged waived for under 2 years old | |

Price in Ringgit Malaysia per person min 2 pax per trip

Route 1: Singapore – Penang – Langkawi - Singapore

Date: Mar 29

Route 3: Singapore – Langkawi – Phuket - Singapore

Date: Feb 16, 23

Route 5: Singapore – Melaka - Langkawi - Singapore

Date: Mar 1, 22

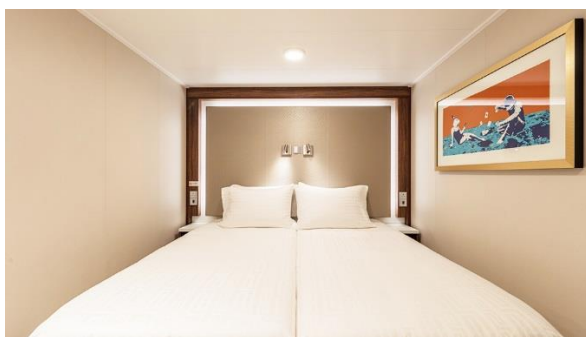
Route 2: Singapore – Penang - Phuket - Singapore

Date: Jan 19

Route 4: Singapore – Melaka - Penang - Singapore

Date: Jan 22, Feb 9

Inside Stateroom



Size (SQM): over 13

Capacity: 2 - 4

Facilities:

- Beds and sofa bed with fine bedding
- Ceiling Pullman bed (optional) available for up to third berth
- Flat-panel television
- Inter-connecting rooms available

Oceanview Stateroom



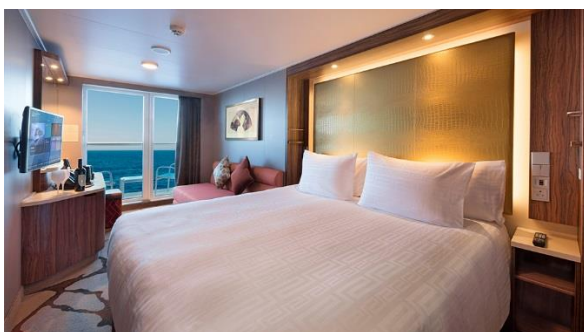
Size (SQM): over 16

Capacity: 2 - 4

Facilities:

- Two single beds with sumptuous bedding together with sleeper single / double sofa bed (optional)
- Ceiling Pullman bed (optional)
- Flat-panel television

Balcony Stateroom



Size (SQM): over 20
Capacity: 2 - 4

Facilities:

- Queen-size bed with sumptuous bedding together with sleeper single / double sofa bed (optional)
- Ceiling pullman bed (optional)
- Private balcony
- Flat-panel television
- Inter-connecting and adjoining staterooms available

Balcony Deluxe



Size (SQM): over 22
Capacity: 2 - 4

Facilities:

- Queen-size bed with sumptuous bedding together with sleeper single / double sofa bed (optional)
- Ceiling Pullman bed (optional)
- Private balcony
- Flat-panel television
- Inter-connecting rooms available

For booking or inquiries, please click on button below:



<http://linktr.ee/cutidipulau>



TERMS & CONDITIONS

- All fares are price per person based on twin sharing in MYR. Travel document & Visa fee, port charges, gratuities; shore excursions and other incidental charges are not included.
- Cruise fares, staterooms and schedules are subject to availability and changes. Additional restrictions and blackout dates may apply.
- Rates are applicable to Malaysian & Foreigners holding employee pass or PR status in Malaysia only.
- Booking is subject to cabin availability and capacity controlled.
- **Return transfer from Berjaya Time Square, Kuala Lumpur to Singapore please add RM150**

BOOKING PERIOD WITH IMMEDIATE EFFECT TILL 31 MAR 2020



www.cutidipulau.com

tholand tholand way
holiday sdn bhd

No. 5-1, Jalan Wangsa Delima 1A
KLSC 3, Wangsa Maju, 53300 Kuala Lumpur.

Hubungi kami :

03-4143 3006