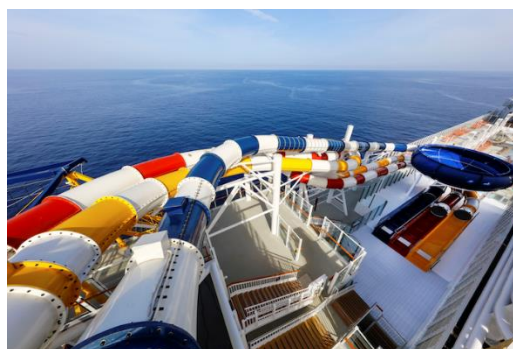


3D2N Pakej Genting Dream Cruise

(SIN – MELAKA / PORT KLANG – SIN)



Stateroom Category	Offer 1 (Limited seat)	Offer 2
Balcony Deluxe	RM947	RM1,052
Balcony	RM870	RM967
Oceanview	N/A	RM867
Interior	RM615	RM683
3 rd / 4 th person in the same room	Same price according to room category	
Infant Fare (under 24 month)	50% of the adult fare according to room category	
Gratuity on board (per person)	RM185 (Melaka), RM213 (Port Klang) for Balcony deluxe & below. Charged waived for under 2 years old	

Price in Ringgit Malaysia per person min 2 pax per trip

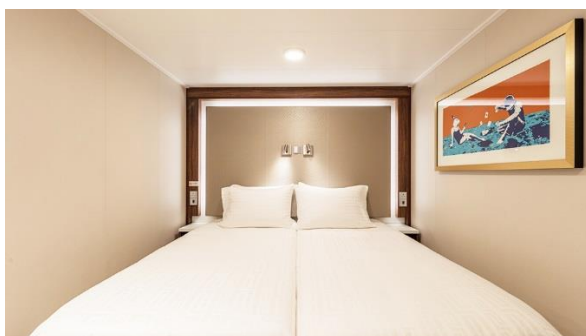
Route: Singapore – Melaka - Singapore
Date: Jan 12 | Feb 19, 26 | Mar 4, 11, 25

Route: Singapore – Port Klang - Singapore
Date: Jan 8 | Feb 12 | Apr 01

www.cutidipulau.com

Hubungi kami :

Inside Stateroom



Size (SQM): over 13
Capacity: 2 - 4

Facilities:

- Beds and sofa bed with fine bedding
- Ceiling Pullman bed (optional) available for up to third berth
- Flat-panel television
- Inter-connecting rooms available

Oceanview Stateroom

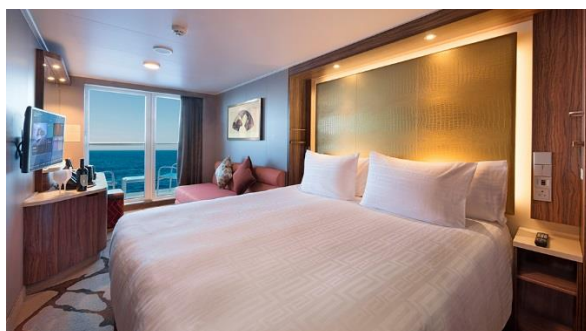


Size (SQM): over 16
Capacity: 2 - 4

Facilities:

- Two single beds with sumptuous bedding together with sleeper single / double sofa bed (optional)
- Ceiling Pullman bed (optional)
- Flat-panel television

Balcony Stateroom



Size (SQM): over 20
Capacity: 2 - 4

Balcony Deluxe



Size (SQM): over 22
Capacity: 2 - 4

<p>Facilities:</p> <ul style="list-style-type: none"> • Queen-size bed with sumptuous bedding together with sleeper single / double sofa bed (optional) • Ceiling pullman bed (optional) • Private balcony • Flat-panel television • Inter-connecting and adjoining staterooms available 	<p>Facilities:</p> <ul style="list-style-type: none"> • Queen-size bed with sumptuous bedding together with sleeper single / double sofa bed (optional) • Ceiling Pullman bed (optional) • Private balcony • Flat-panel television • Inter-connecting rooms available
--	---

For booking or inquiries, please click on button below:



<http://linktr.ee/cutidipulau>

TERMS & CONDITIONS

- All fares are price per person based on twin sharing in MYR. Travel document & Visa fee, port charges, gratuities; shore excursions and other incidental charges are not included.
- Cruise fares, staterooms and schedules are subject to availability and changes. Additional restrictions and blackout dates may apply.
- Rates are applicable to Malaysian & Foreigners holding employee pass or PR status in Malaysia only.
- Booking is subject to cabin availability and capacity controlled.

BOOKING PERIOD WITH IMMEDIATE EFFECT TILL 31 MAR 2020