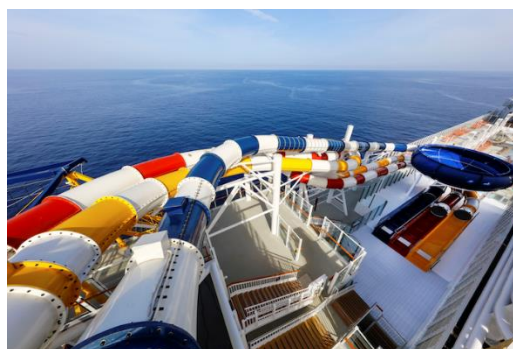


## 2D1N Pakej Genting Dream Cruise

(PEN – SIN 1 WAY)



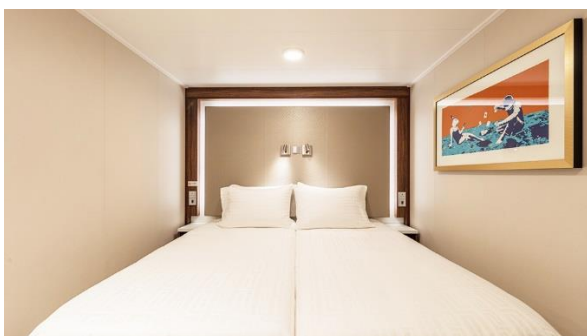
Stateroom Category	PRICE PER PERSON MIN 2 PAX
Balcony Deluxe	RM899
Balcony	RM799
Oceanview	RM699
Interior	RM499
3 <sup>rd</sup> / 4 <sup>th</sup> person share the same room	50% of the adult fare according to room category
Infant Fare (under 24 month)	25% of the adult fare according to room category
Gratuity on board (per person)	RM94 for Balcony deluxe & below. Charged waived for under 2 years old

Price in Ringgit Malaysia per person min 2 pax per trip

**Date**

May 7 2020

### Inside Stateroom



**Size (SQM):** over 13

**Capacity:** 2 - 4

**Facilities:**

- Beds and sofa bed with fine bedding
- Ceiling Pullman bed (optional) available for up to third berth
- Flat-panel television
- Inter-connecting rooms available

### Oceanview Stateroom



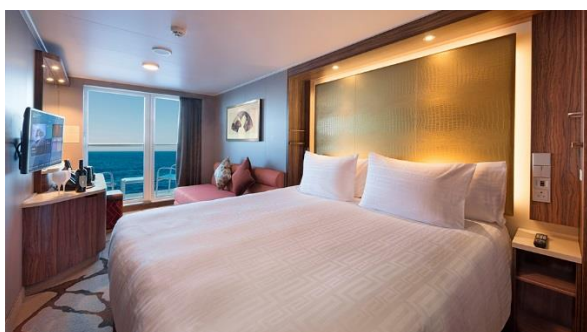
**Size (SQM):** over 16

**Capacity:** 2 - 4

**Facilities:**

- Two single beds with sumptuous bedding together with sleeper single / double sofa bed (optional)
- Ceiling Pullman bed (optional)
- Flat-panel television

### Balcony Stateroom



**Size (SQM):** over 20

**Capacity:** 2 - 4

**Facilities:**

- Queen-size bed with sumptuous bedding together with sleeper single / double sofa bed (optional)

### Balcony Deluxe



**Size (SQM):** over 22

**Capacity:** 2 - 4



**Facilities:**

- Queen-size bed with sumptuous bedding together with sleeper single / double sofa bed (optional)

[www.cutidipulau.com](http://www.cutidipulau.com)

Hubungi kami :



<ul style="list-style-type: none"> <li>• Ceiling pullman bed (optional)</li> <li>• Private balcony</li> <li>• Flat-panel television</li> <li>• Inter-connecting and adjoining staterooms available</li> </ul>	<ul style="list-style-type: none"> <li>• Ceiling Pullman bed (optional)</li> <li>• Private balcony</li> <li>• Flat-panel television</li> <li>• Inter-connecting rooms available</li> </ul>
<p style="text-align: center;"><b>Palace Suite</b></p>  <p><b>Size (SQM):</b> 37  <b>Capacity:</b> 4  <b>Facilities:</b></p> <ul style="list-style-type: none"> <li>• Queen-size bed with fine bedlinens and double sofa bed*</li> <li>• Private balcony</li> <li>• 24-hour dedicated Butler Concierge service</li> <li>• Walk-in closet</li> <li>• Flat-panel television</li> <li>• Luxury bathroom with full bathtub / shower combination (wheelchair-accessible stateroom with shower only)</li> <li>• Inter-connecting rooms available</li> </ul>	<p style="text-align: center;"><b>Palace Deluxe Suite</b></p>  <p><b>Size (SQM):</b> 41 - 67  <b>Capacity:</b> 4  <b>Facilities:</b></p> <ul style="list-style-type: none"> <li>• Separate bedroom with 1 Queen-size bed with sumptuous bedding</li> <li>• Private balcony</li> <li>• Contemporary sitting and dining area*</li> <li>• 24-hour dedicated Butler Concierge service</li> <li>• Flat-panel television</li> <li>• Private bathroom with full bathtub, separate shower / toilet</li> <li>• Inter-connecting and adjoining staterooms available</li> </ul>

For booking or inquiries, please click on button below:



<http://linktr.ee/cutidipulau>



## TERMS & CONDITIONS

- 1) All fares are price per person based on twin sharing in MYR. Travel document & Visa fee, port charges, gratuities; shore excursions and other incidental charges are not included.
- 2) Cruise fares, staterooms and schedules are subject to availability and changes. Additional restrictions and blackout dates may apply.
- 3) Rates are applicable to Malaysian & Foreigners holding employee pass or PR status in Malaysia only.
- 4) **Transportation from Singapore Port to Berjaya Time Square transfer RM90 per person**

**BOOKING PERIOD WITH IMMEDIATE EFFECT TILL ALLOCATED CABIN SOLD OUT**



[www.cutidipulau.com](http://www.cutidipulau.com)

**tholand** tholand way  
holiday sdn bhd

No. 5-1, Jalan Wangsa Delima 1A  
KLSC 3, Wangsa Maju, 53300 Kuala Lumpur.

**Hubungi kami :**

**03-4143 3006**