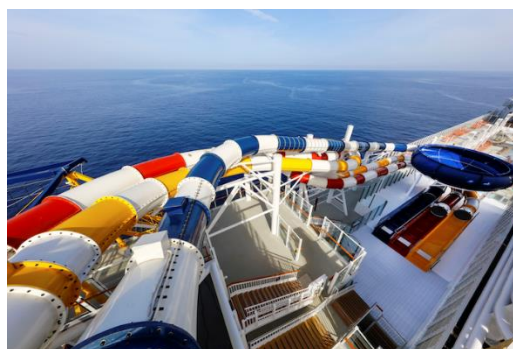


## 3D2N Pakej Genting Dream Cruise

(SIN – BINTAN ISLAND – SIN)



Stateroom Category	LOW SEASON	MID SEASON
Palace Deluxe Suite	RM2,258	RM2,258
Palace Suite	RM1,768	RM1,768
Balcony Deluxe	RM1,082	RM1,373
Balcony	RM1,014	RM1,300
Oceanview	RM843	RM1,069
Interior	RM661	RM838
3 <sup>rd</sup> / 4 <sup>th</sup> person in the same room	Same price according to room category	
Infant Fare (under 24 month)	50% of the adult fare according to room category	
Gratuity on board (per person)	RM228 for Balcony deluxe & below. Charged waived for under 2 years old	

Price in Ringgit Malaysia per person min 2 pax per trip

[www.cutidipulau.com](http://www.cutidipulau.com)

Hubungi kami :

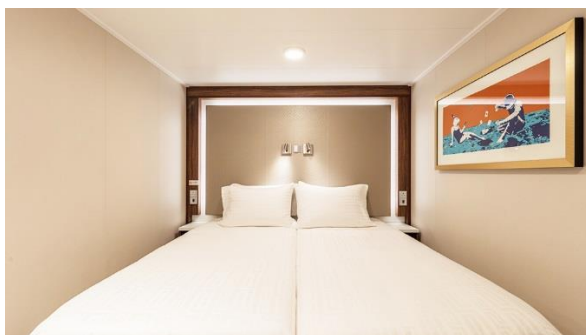
### Low Season

Apr 17, 24 | May 1, 15 | Jul 3, 10, 17, 24, 31 | Aug 14, 21, 28 | Sep 4, 11, 25 | Oct 2, 9, 16, 23, 30 | Nov 6, 13

### Mid Season

Apr 10 | May 8, 22, 29 | Jun 5, 12, 19, 26

#### Inside Stateroom



**Size (SQM):** over 13

**Capacity:** 2 - 4

**Facilities:**

- Beds and sofa bed with fine bedding
- Ceiling Pullman bed (optional) available for up to third berth
- Flat-panel television
- Inter-connecting rooms available

#### Oceanview Stateroom



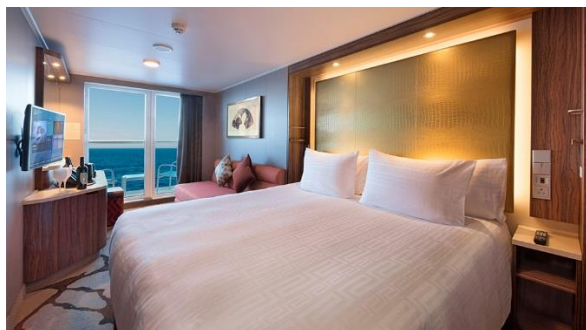
**Size (SQM):** over 16

**Capacity:** 2 - 4

**Facilities:**

- Two single beds with sumptuous bedding together with sleeper single / double sofa bed (optional)
- Ceiling Pullman bed (optional)
- Flat-panel television

#### Balcony Stateroom



#### Balcony Deluxe





**Size (SQM):** over 20

**Capacity:** 2 - 4

**Facilities:**

- Queen-size bed with sumptuous bedding together with sleeper single / double sofa bed (optional)
- Ceiling pullman bed (optional)
- Private balcony
- Flat-panel television
- Inter-connecting and adjoining staterooms available

**Size (SQM):** over 22

**Capacity:** 2 - 4

**Facilities:**

- Queen-size bed with sumptuous bedding together with sleeper single / double sofa bed (optional)
- Ceiling Pullman bed (optional)
- Private balcony
- Flat-panel television
- Inter-connecting rooms available

### Palace Suite



**Size (SQM):** 37

**Capacity:** 4

**Facilities:**

- Queen-size bed with fine bedlinens and double sofa bed\*
- Private balcony
- 24-hour dedicated Butler Concierge service
- Walk-in closet
- Flat-panel television
- Luxury bathroom with full bathtub / shower combination (wheelchair-accessible stateroom with shower only)
- Inter-connecting rooms available

### Palace Deluxe Suite



**Size (SQM):** 41 - 67

**Capacity:** 4

**Facilities:**

- Separate bedroom with 1 Queen-size bed with sumptuous bedding
- Private balcony
- Contemporary sitting and dining area\*
- 24-hour dedicated Butler Concierge service
- Flat-panel television
- Private bathroom with full bathtub, separate shower / toilet
- Inter-connecting and adjoining staterooms available

For booking or inquiries, please click on button below:



<http://linktr.ee/cutidipulau>

#### TERMS & CONDITIONS

- 1) All fares are price per person based on twin sharing in MYR. Travel document & Visa fee, port charges, gratuities; shore excursions and other incidental charges are not included.
- 2) Cruise fares, staterooms and schedules are subject to availability and changes. Additional restrictions and blackout dates may apply.
- 3) Rates are applicable to Malaysian & Foreigners holding employee pass or PR status in Malaysia only.
- 4) **Transportation from Berjaya Time Square to Singapore Port return transfer RM150 per person**
- 5) **Ferry/boat service to Bintan Island will be charge at SGD30 per person and require to pay onboard only.**

**BOOKING PERIOD WITH IMMEDIATE EFFECT TILL 13 NOV 2020**