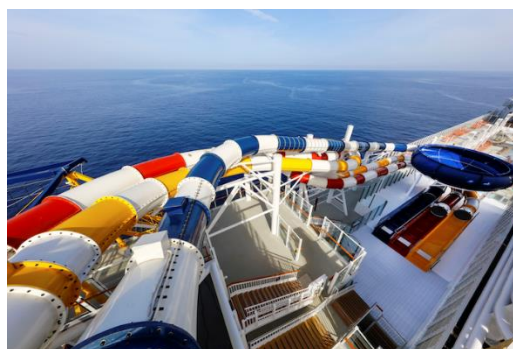


2D1N Pakej Genting Dream Cruise

(PEN – SIN 1 WAY)



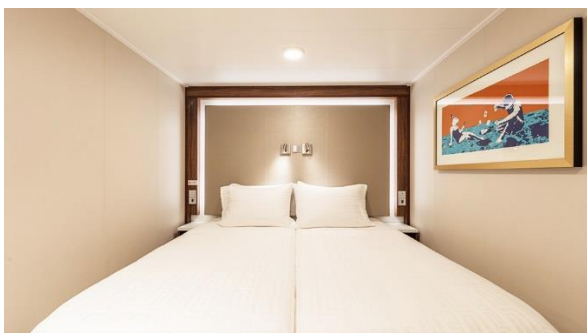
Stateroom Category	PRICE PER PERSON MIN 2 PAX
Balcony Deluxe	RM899
Balcony	RM799
Oceanview	RM699
Interior	RM499
3 rd / 4 th person share the same room	50% of the adult fare according to room category
Infant Fare (under 24 month)	25% of the adult fare according to room category
Port Charge (per person)	RM94 per person
Gratuities Per Person (pay on board)	SGD\$26 for Palace Suite & above. SGD\$21 for Balcony Deluxe & below. Charged waived for children below 2 years.

Price in Ringgit Malaysia per person min 2 pax per trip

Route: Penang – Singapore (1 way only)

Date: May 7 2020

Inside Stateroom



Size (SQM): over 13

Capacity: 2 - 4

Facilities:

- Beds and sofa bed with fine bedding
- Ceiling Pullman bed (optional) available for up to third berth
- Flat-panel television
- Inter-connecting rooms available

Oceanview Stateroom



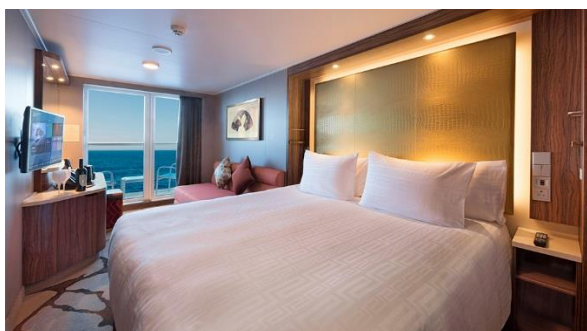
Size (SQM): over 16

Capacity: 2 - 4

Facilities:

- Two single beds with sumptuous bedding together with sleeper single / double sofa bed (optional)
- Ceiling Pullman bed (optional)
- Flat-panel television

Balcony Stateroom



Size (SQM): over 20

Capacity: 2 - 4

Facilities:

- Queen-size bed with sumptuous bedding together with sleeper single / double sofa bed (optional)

Balcony Deluxe



Size (SQM): over 22

Capacity: 2 - 4

Facilities:

- Ceiling pullman bed (optional)
- Private balcony
- Flat-panel television
- Inter-connecting and adjoining staterooms available

- Queen-size bed with sumptuous bedding together with sleeper single / double sofa bed (optional)
- Ceiling Pullman bed (optional)
- Private balcony
- Flat-panel television
- Inter-connecting rooms available

Palace Suite



Size (SQM): 37

Capacity: 4

Facilities:

- Queen-size bed with fine bedlinens and double sofa bed*
- Private balcony
- 24-hour dedicated Butler Concierge service
- Walk-in closet
- Flat-panel television
- Luxury bathroom with full bathtub / shower combination (wheelchair-accessible stateroom with shower only)
- Inter-connecting rooms available

Palace Deluxe Suite



Size (SQM): 41 - 67

Capacity: 4

Facilities:

- Separate bedroom with 1 Queen-size bed with sumptuous bedding
- Private balcony
- Contemporary sitting and dining area*
- 24-hour dedicated Butler Concierge service
- Flat-panel television
- Private bathroom with full bathtub, separate shower / toilet
- Inter-connecting and adjoining staterooms available



For booking or inquiries, please click on button below:



<http://linktr.ee/cutidipulau>

TERMS & CONDITIONS

- 1) All fares are price per person based on twin sharing in MYR. Travel document & Visa fee, port charges, gratuities; shore excursions and other incidental charges are not included.
- 2) Cruise fares, staterooms and schedules are subject to availability and changes. Additional restrictions and blackout dates may apply.
- 3) Rates are applicable to Malaysian & Foreigners holding employee pass or PR status in Malaysia only.
- 4) **Transportation from Singapore Port to Berjaya Time Square transfer RM90 per person**

BOOKING PERIOD WITH IMMEDIATE EFFECT TILL ALLOCATED CABIN SOLD OUT