

3D2N Pakej Genting Dream Cruise

(SIN – BINTAN ISLAND – SIN)



Stateroom Category	LOW SEASON	MID SEASON
Palace Deluxe Suite	RM4,516	RM4,516
Palace Suite	RM3,536	RM3,536
Balcony Deluxe	RM2,163	RM2,745
Balcony	RM2,027	RM2,600
Oceanview	RM1,686	RM2,138
Interior	RM1,321	RM1,676
3 rd / 4 th person in the same room	50% of adult price according to room category	
Infant Fare (under 24 month)	25% of the adult fare according to room category	
Port Charge (per person)	RM228 for Balcony deluxe & below. Charged waived for under 2 years old	
Gratuity Per Person (pay on board)	SGD\$26 for Palace Suite & above. SGD\$21 for Balcony Deluxe & below. Charged waived for children below 2 years.	

Price in Ringgit Malaysia per person min 2 pax per trip

www.cutidipulau.com

Hubungi kami :

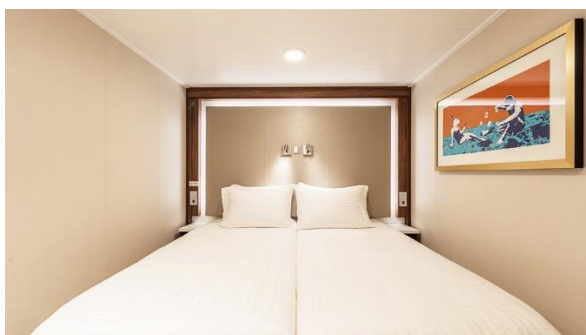
Low Season

Apr 17, 24 | May 1, 15 | Jul 3, 10, 17, 24, 31 | Aug 14, 21, 28 | Sep 4, 11, 25 | Oct 2, 9, 16, 23, 30 | Nov 6, 13

Mid Season

Apr 10 | May 8, 22, 29 | Jun 5, 12, 19, 26

Inside Stateroom



Size (SQM): over 13

Capacity: 2 - 4

Facilities:

- Beds and sofa bed with fine bedding
- Ceiling Pullman bed (optional) available for up to third berth
- Flat-panel television
- Inter-connecting rooms available

Oceanview Stateroom



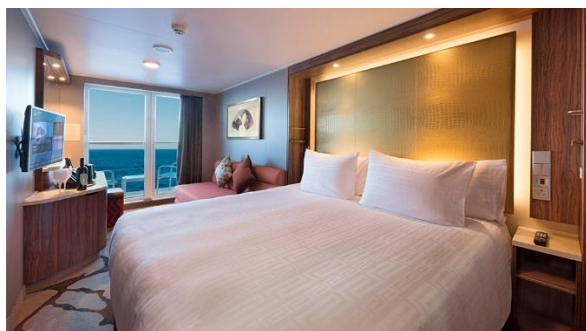
Size (SQM): over 16

Capacity: 2 - 4

Facilities:

- Two single beds with sumptuous bedding together with sleeper single / double sofa bed (optional)
- Ceiling Pullman bed (optional)
- Flat-panel television

Balcony Stateroom



Balcony Deluxe



Size (SQM): over 20

Capacity: 2 - 4

Facilities:

- Queen-size bed with sumptuous bedding together with sleeper single / double sofa bed (optional)
- Ceiling pullman bed (optional)
- Private balcony
- Flat-panel television
- Inter-connecting and adjoining staterooms available

Size (SQM): over 22

Capacity: 2 - 4

Facilities:

- Queen-size bed with sumptuous bedding together with sleeper single / double sofa bed (optional)
- Ceiling Pullman bed (optional)
- Private balcony
- Flat-panel television
- Inter-connecting rooms available

Palace Suite



Size (SQM): 37

Capacity: 4

Facilities:

- Queen-size bed with fine bedlinens and double sofa bed*
- Private balcony
- 24-hour dedicated Butler Concierge service
- Walk-in closet
- Flat-panel television
- Luxury bathroom with full bathtub / shower combination (wheelchair-accessible stateroom with shower only)
- Inter-connecting rooms available

Palace Deluxe Suite



Size (SQM): 41 - 67

Capacity: 4

Facilities:

- Separate bedroom with 1 Queen-size bed with sumptuous bedding
- Private balcony
- Contemporary sitting and dining area*
- 24-hour dedicated Butler Concierge service
- Flat-panel television
- Private bathroom with full bathtub, separate shower / toilet
- Inter-connecting and adjoining staterooms available

For booking or inquiries, please click on button below:



<http://linktr.ee/cutidipulau>

TERMS & CONDITIONS

- 1) All fares are price per person based on twin sharing in MYR. Travel document & Visa fee, port charges, gratuities; shore excursions and other incidental charges are not included.
- 2) Cruise fares, staterooms and schedules are subject to availability and changes. Additional restrictions and blackout dates may apply.
- 3) Rates are applicable to Malaysian & Foreigners holding employee pass or PR status in Malaysia only.
- 4) **Transportation from Berjaya Time Square to Singapore Port return transfer RM150 per person**
- 5) **Ferry/boat service to Bintan Island will be charge at SGD30 per person and require to pay onboard only.**

BOOKING PERIOD WITH IMMEDIATE EFFECT TILL 13 NOV 2020